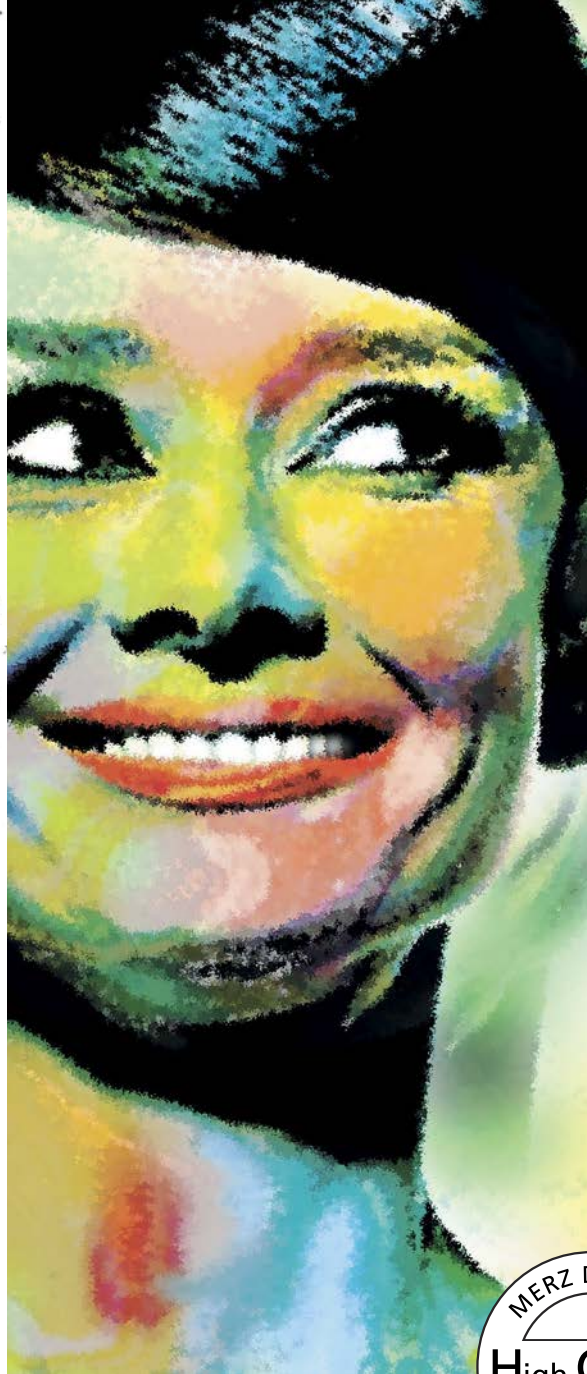


The Modern Art of Teeth



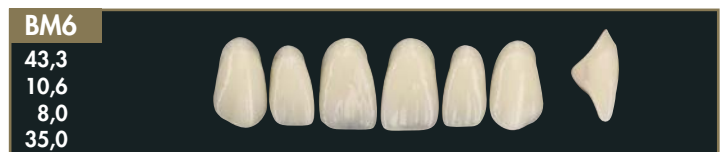
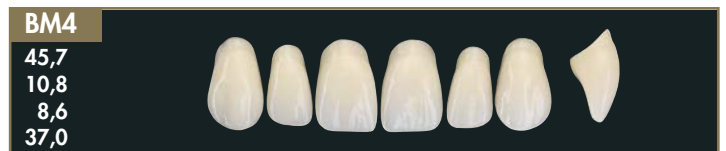
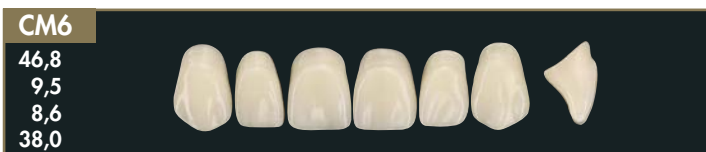
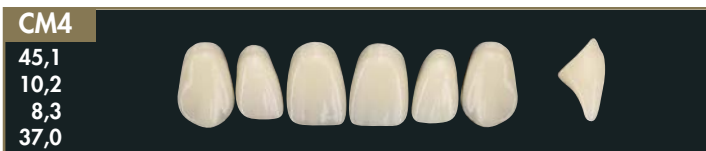
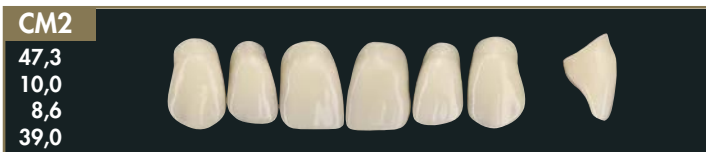
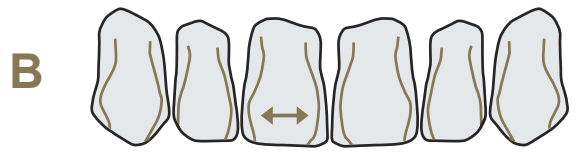
CBI® SYSTEM



Polystar®

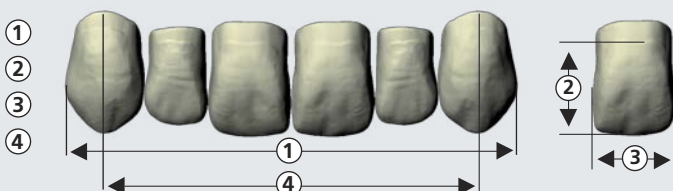
EDITION

Selection

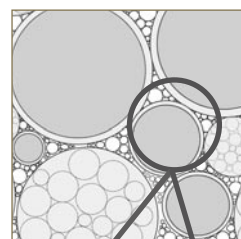


Shade Guide REF 1030264 A1-D4, BL1-BL4

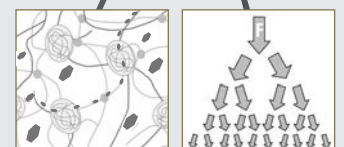
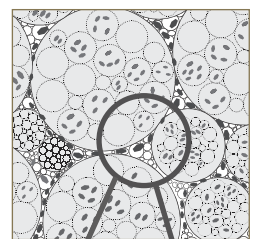
± 1,5 %



OMP-N®
Organic Modified Polymer-Network

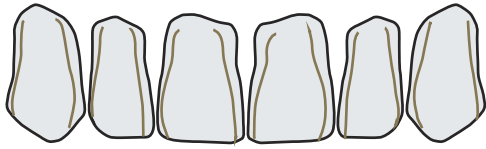


HMP-N®
Highly Modified Polymer-Network

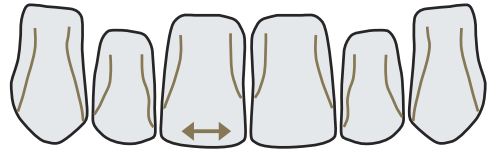


inorganic filler

BI



I



BIL1

53,0
13,1
9,7
46,5

BIL2

46,2
11,2
8,7
39,0

BIM2

46,4
10,2
8,1
38,0

BIM4

45,6
10,3
8,3
38,0

BIM6

44,4
10,0
8,2
37,0

BIS2

42,2
9,8
7,7
35,0

IL2

47,2
10,0
8,6
39,0

IM2

47,7
10,2
8,9
39,0

IM4

45,5
10,4
8,4
39,0

IM6

44,6
9,4
8,1
37,0

IS2

42,2
8,8
7,7
35,0

UM8

35,6
9,0
5,3

UM6

35,1
9,3
5,3

UM4

37,6
9,8
5,6

UM2

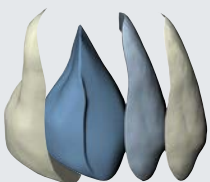
35,5
9,3
5,2

UL4

38,0
10,5
5,3

UL2

38,6
11,5
5,7



4 EDITION OMP-N®



4 EDITION OMP-N® HMP-N®



4 EDITION 2 OMP-N®



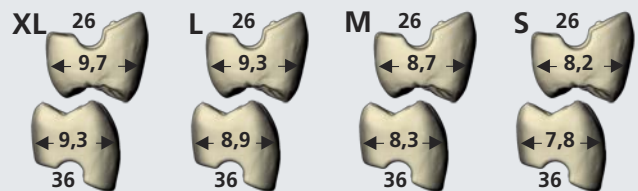
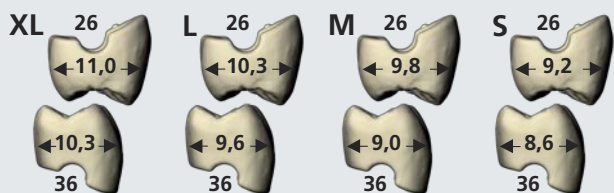
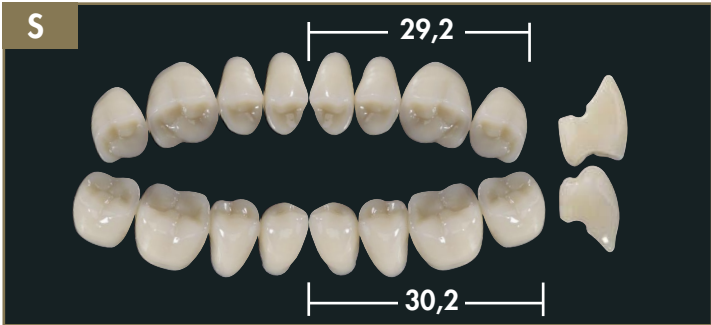
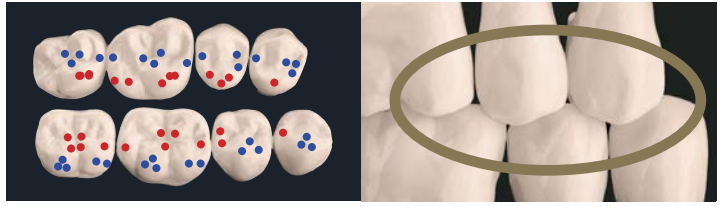
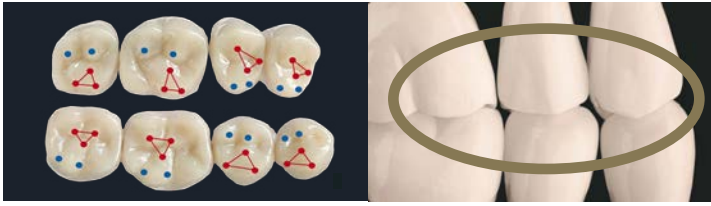
PSG® Patented Preventive Shift Groove



15°

Polystar® **EDITION**
Selection

Polystar® **EDITION 2**
Selection



Polystar® EDITION Selection



CL 2
CM 2
CM 4
CM 6
CS 2
BL 2
BM 2
BM 4
BM 6
BS 2
BIL 1
BIL 2
BIM 2
BIM 4
BIM 6
BIS 2
IL 2
IM 2
IM 4
IM 6
IS 2



UL 2 / UL 4
UM 2 / UM 4 / UM 8 / UM 10
UM 4 / UM 2
UM 6 / US 2
US 2 / US 4
UL 2 / UL 4 / UM 4
UM 2 / UM 4 / UM 8 / UM 10
UM 4 / UM 2
UM 6 / US 2
US 2 / US 4
UL 2
UL 2 / UL 4
UM 2 / UM 4 / UM 8 / UM 10
UM 4 / UM 2
UM 6 / US 2
US 2 / US 4
UL 2 / UL 4
UM 2 / UM 4 / UM 8 / UM 10
UM 4 / UM 2
UM 6 / US 2
US 2 / US 4

EDITION



XL / L
L / M
M
M / S
S
XL / L
L / M
M
M / S
S
XL
L
L / M
M
M / S
S
L
L / M
M
M / S
S

EDITION 2



XL / L
L / M
M
M / S
S
XL / L
L / M
M
M / S
S
XL
L
L / M
M
M / S
S
L
L / M
M
M / S
S



OMP-N®



OMP-N®



HMP-N®



OMP-N®



Sicherheitsdatenblatt auf Anfrage erhältlich.
Safety data sheet available on request.
Fiche de données de sécurité disponible sur demande.
Scheda dati di sicurezza disponibile su richiesta.
Puede solicitarse la ficha de datos de seguridad.



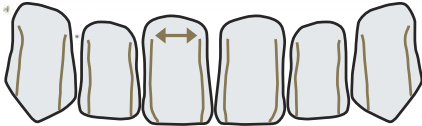
Merz Dental GmbH
Kieferweg 1, 24321 Lütjenburg, Germany
Tel + 49 (0) 4381/403-0
Fax + 49 (0) 4381/403-403
www.merz-dental.de
EN ISO 13485



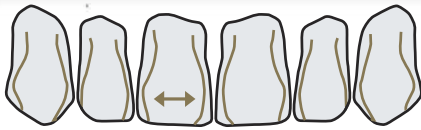
CBI[®] System



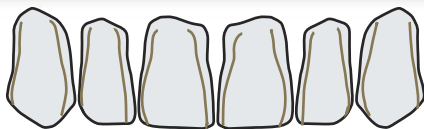
C



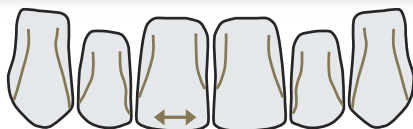
B



BI



I



Polystar[®] | EDITION | Selection

